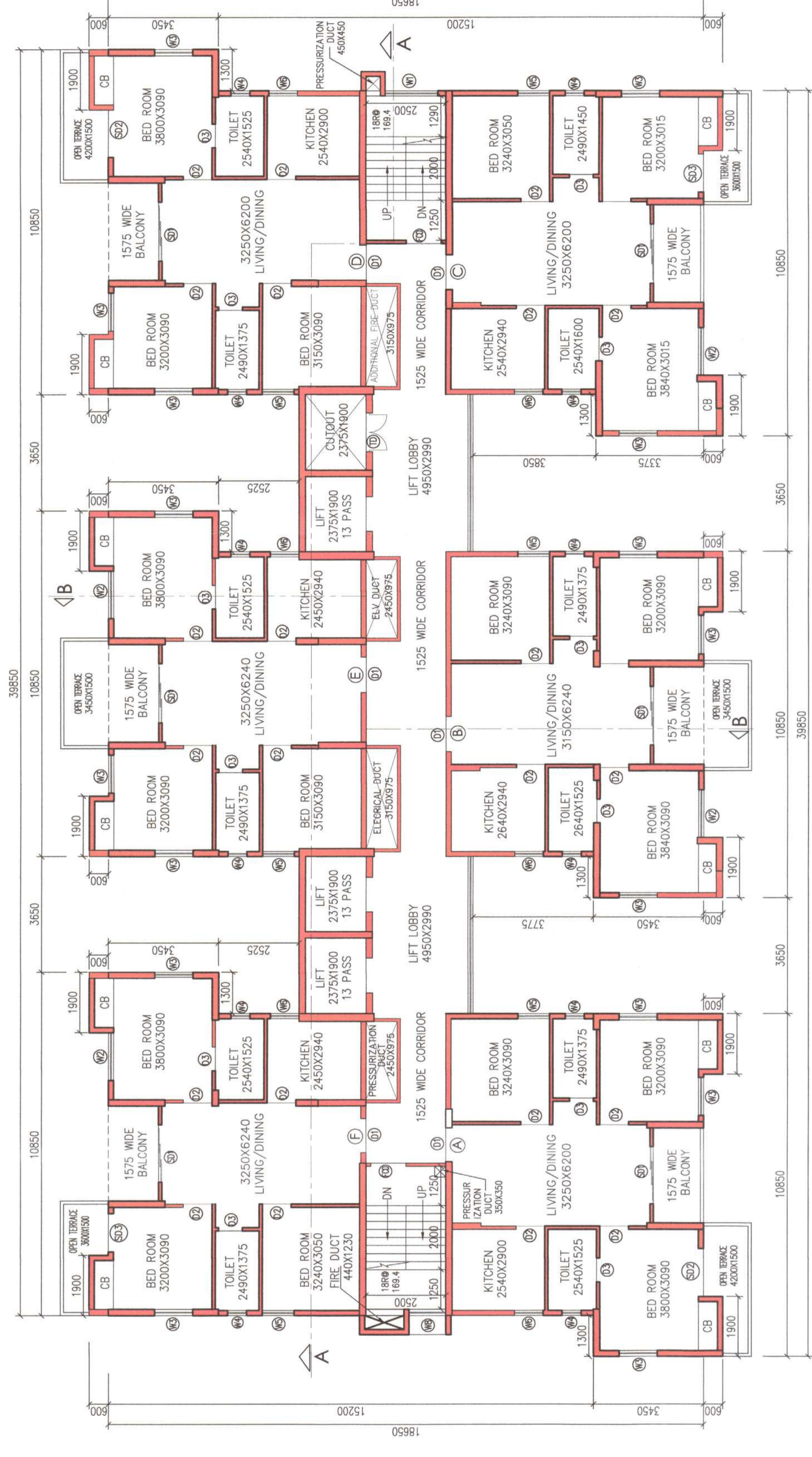


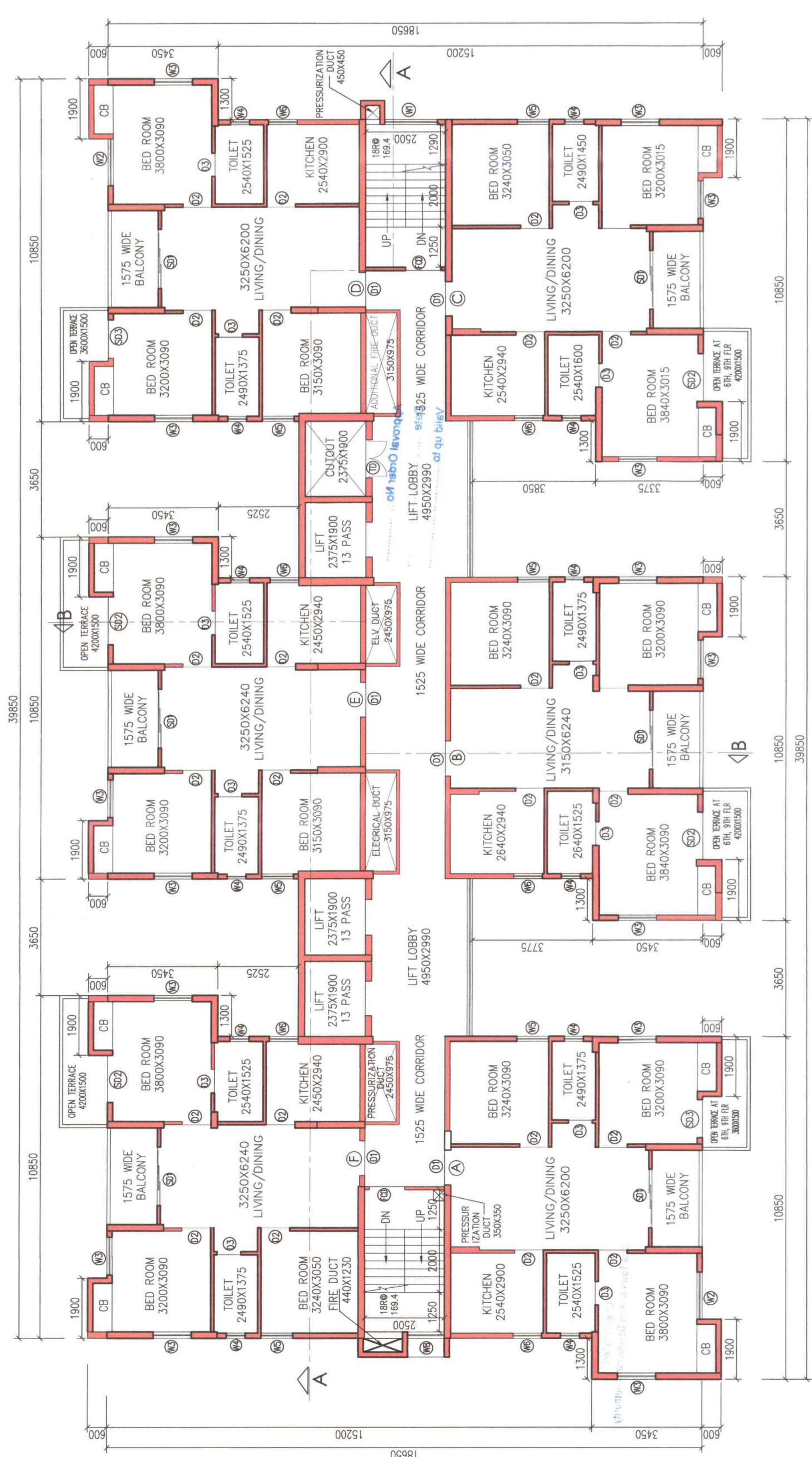
PROJECT

REVISED PLAN PROPOSAL FOR BACHUBHAR (S.12.3A), CA/W/08/02/19/02/20 & CH/01/08-RK-4) STORED (40 MTS HEIGHT) RESIDENTIAL BUILDING UNDER MODA CHAPRA, S. NO. 35, R.S./ LR DARGO-143(144(P)), 146, 149, 152(P), 153, 154, 155, 156, 157, 258, 259, 260, 261, 262, 263, 264 (P), 265(P), 266(P), 267(P), 268(P), 269(P), 271, 272, 273, 277, 280, UNDER PATHAR GHATA, CHAM PANCHAYAT, P.O. & S. RAJNARAY NORTH 24 PARAGANAS, KOLKATA - 700135. SUPERSEDING PREVIOUS MEMO NO. 8291/ NDA/ NDA/ 04(53)/2020. DATED- 02 / 08 / 21.

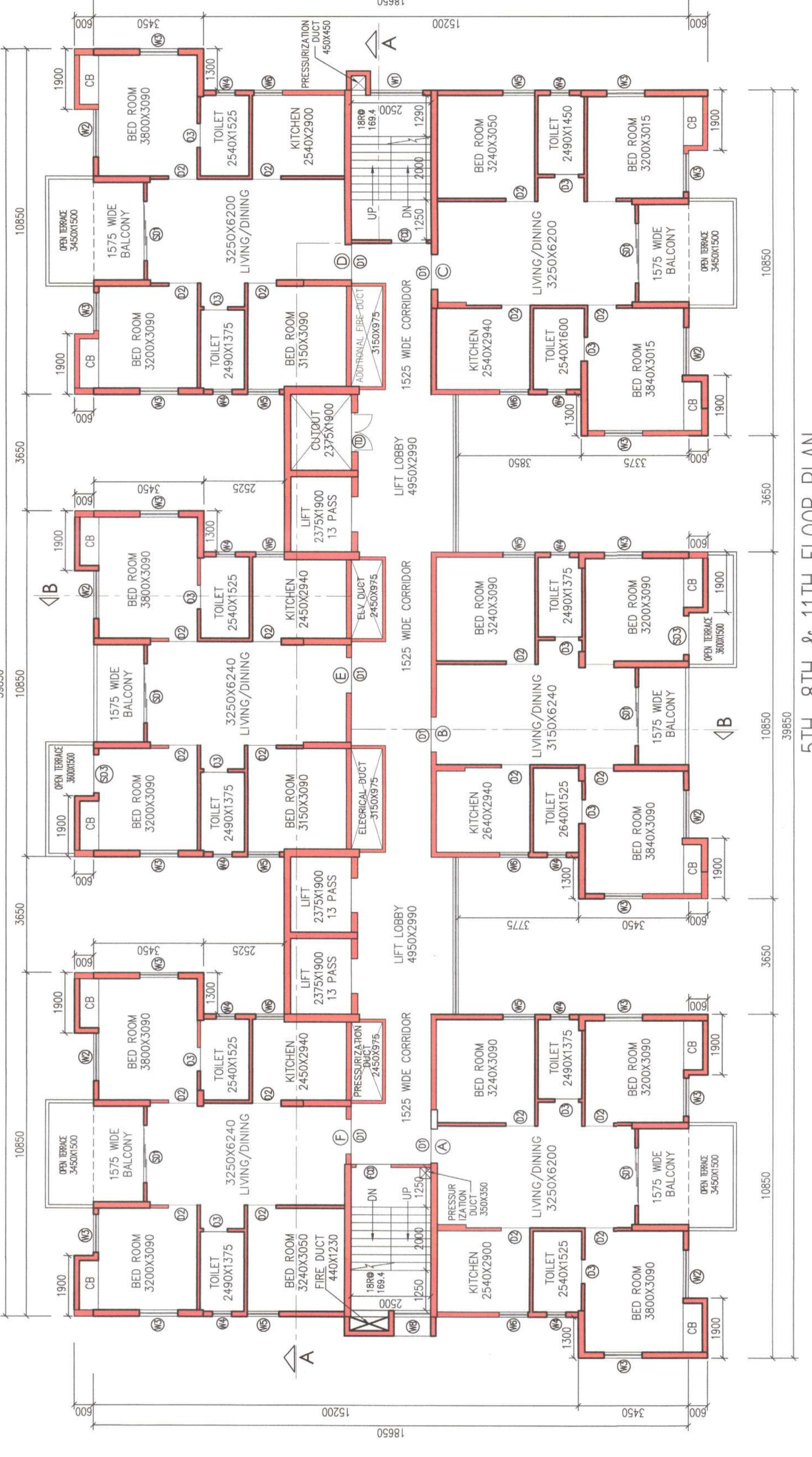
- SPECIAL NOTES**
1. Fly ash and fly based materials are to be used for construction.
 2. There is not any water body (pond) in the plot.
 3. Solar panel are provided at roof top for generation of energy of energy equivalent to 1% of the connected load.



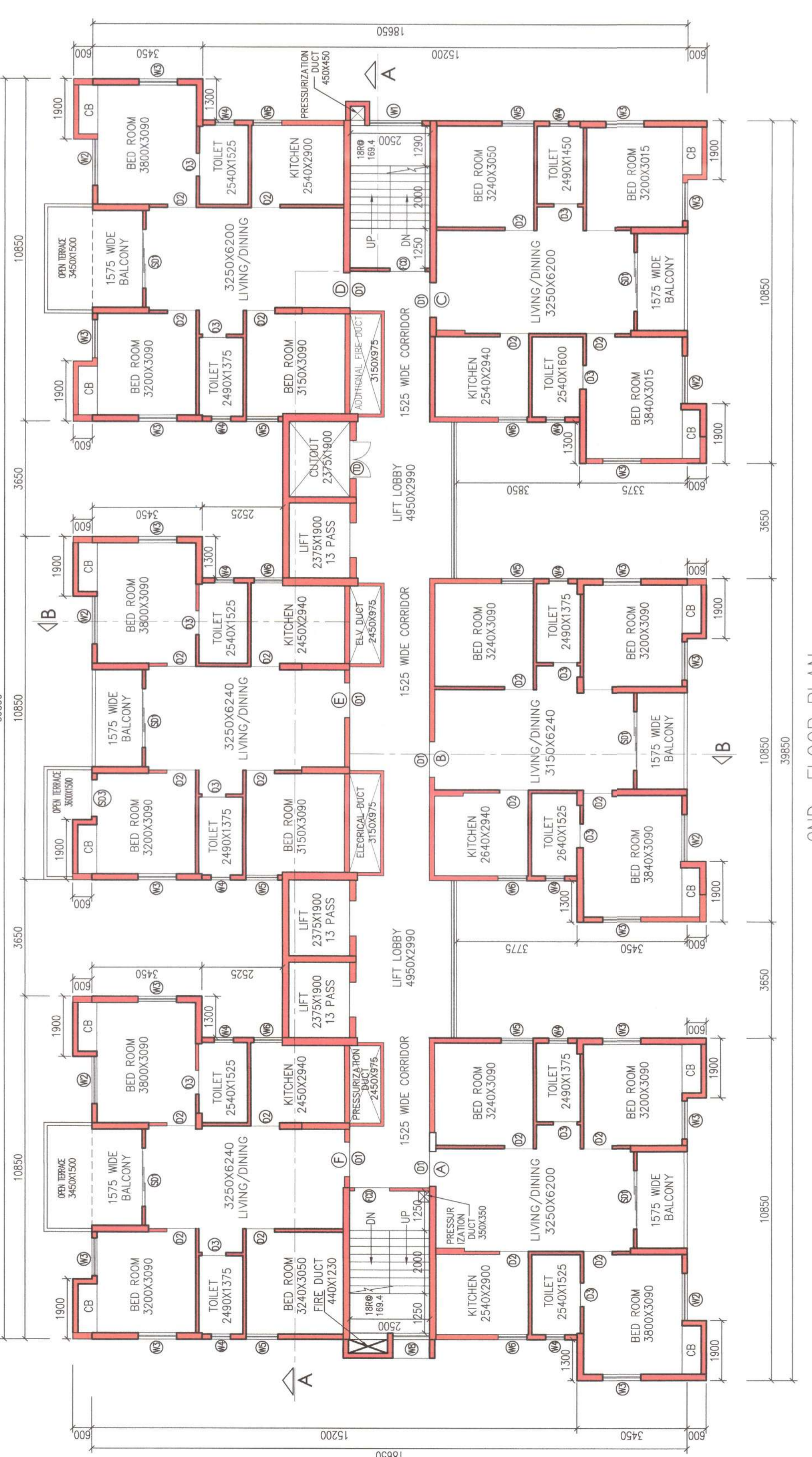
4TH. & 10TH FLOOR PLAN



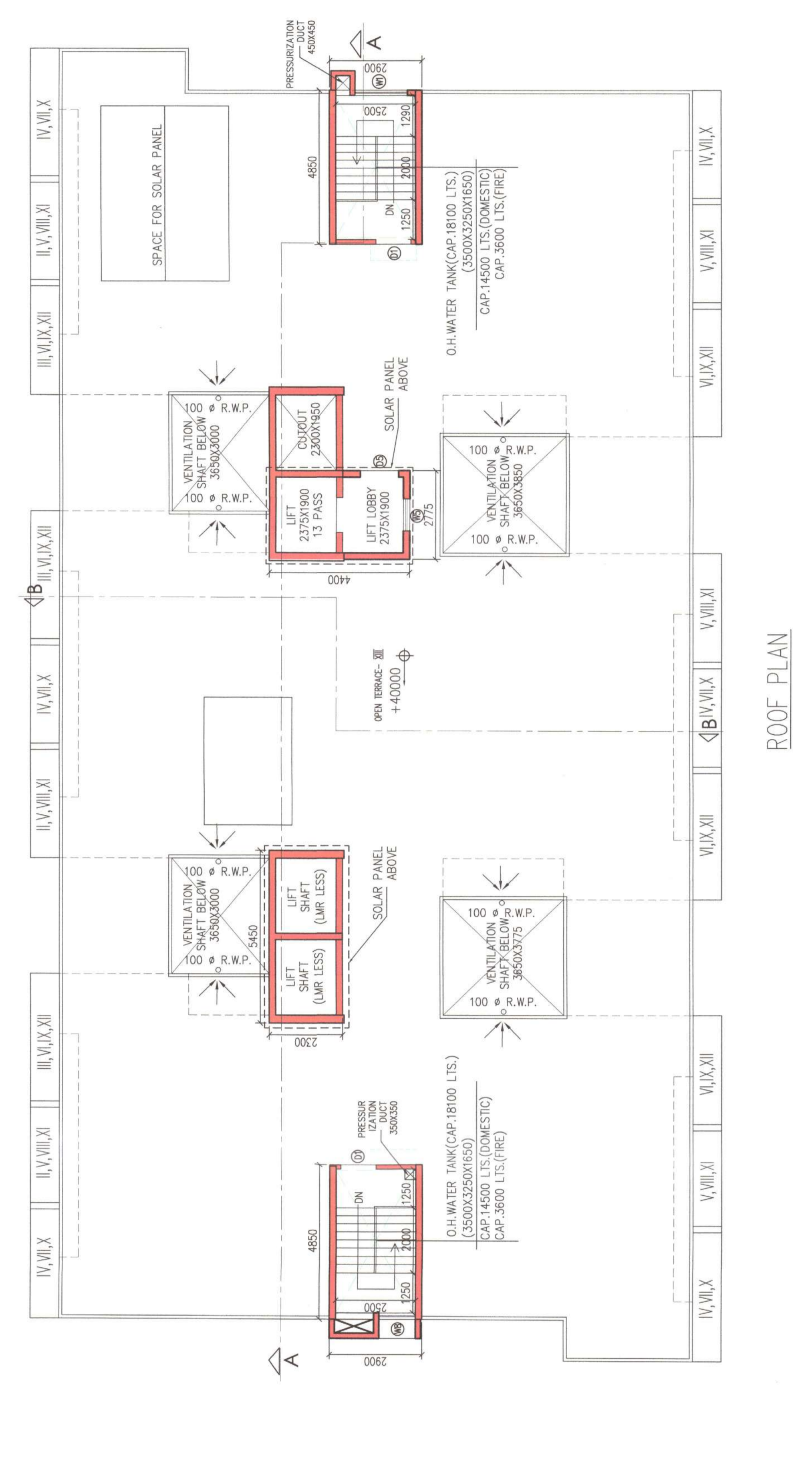
3RD, 6TH & 9TH FLOOR PLAN



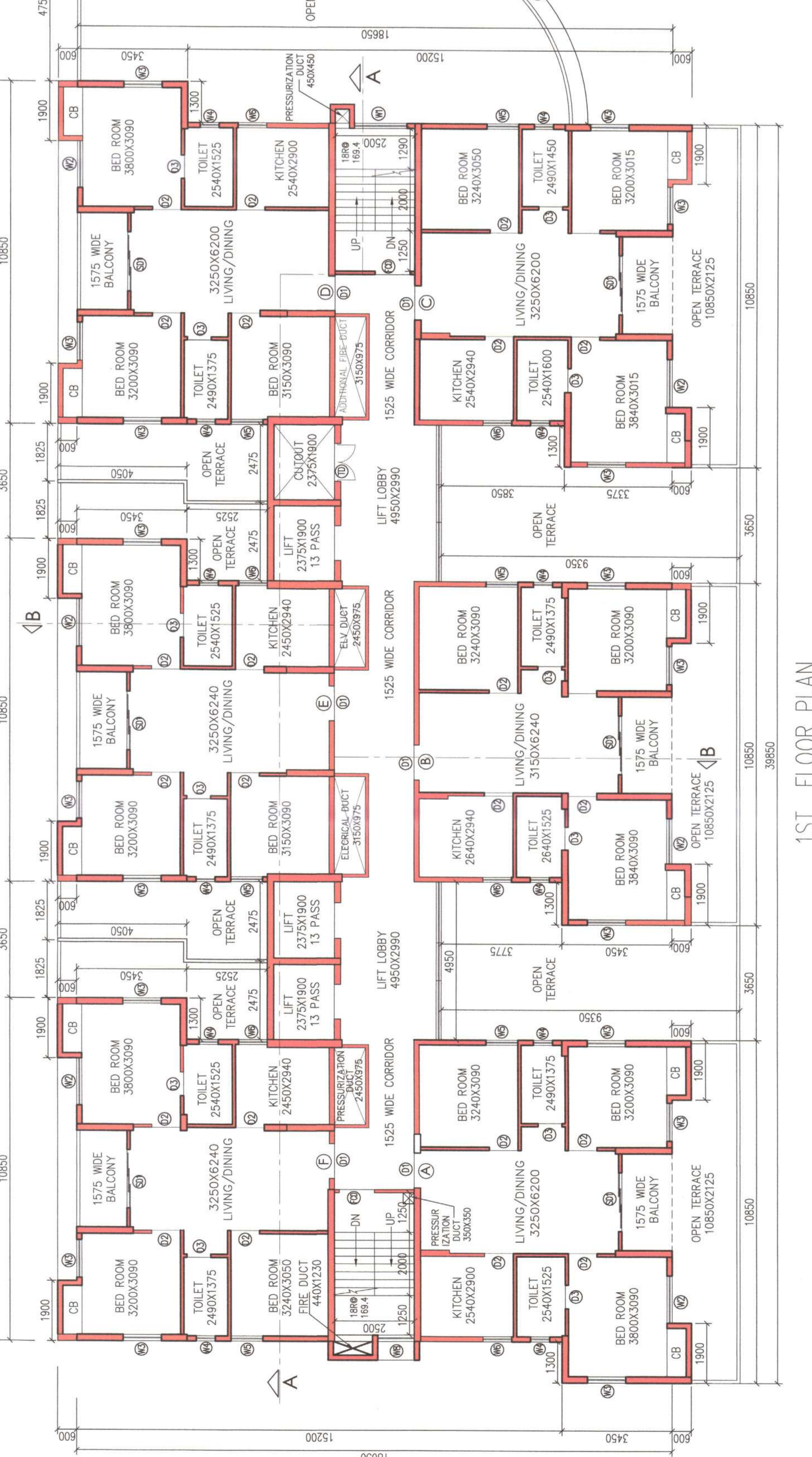
5TH, 8TH & 11TH FLOOR PLAN



2ND FLOOR PLAN



ROOF PLAN



1ST FLOOR PLAN

NO.	WIDTH	HEIGHT	DETAIL	DESCRIPTION
1	100	1500	ALUM. GLASS CASSETT WINDOW	ALUM. GLASS CASSETT WINDOW
2	100	1500	ALUM. CASSETT WINDOW	ALUM. CASSETT WINDOW
3	100	1500	ALUM. CASSETT WINDOW	ALUM. CASSETT WINDOW
4	100	1500	ALUM. CASSETT WINDOW	ALUM. CASSETT WINDOW
5	100	1500	ALUM. CASSETT WINDOW	ALUM. CASSETT WINDOW
6	100	1500	ALUM. CASSETT WINDOW	ALUM. CASSETT WINDOW
7	100	1500	ALUM. CASSETT WINDOW	ALUM. CASSETT WINDOW
8	100	1500	ALUM. CASSETT WINDOW	ALUM. CASSETT WINDOW
9	100	1500	ALUM. CASSETT WINDOW	ALUM. CASSETT WINDOW
10	100	1500	ALUM. CASSETT WINDOW	ALUM. CASSETT WINDOW
11	100	1500	ALUM. CASSETT WINDOW	ALUM. CASSETT WINDOW
12	100	1500	ALUM. CASSETT WINDOW	ALUM. CASSETT WINDOW
13	100	1500	ALUM. CASSETT WINDOW	ALUM. CASSETT WINDOW
14	100	1500	ALUM. CASSETT WINDOW	ALUM. CASSETT WINDOW
15	100	1500	ALUM. CASSETT WINDOW	ALUM. CASSETT WINDOW
16	100	1500	ALUM. CASSETT WINDOW	ALUM. CASSETT WINDOW
17	100	1500	ALUM. CASSETT WINDOW	ALUM. CASSETT WINDOW
18	100	1500	ALUM. CASSETT WINDOW	ALUM. CASSETT WINDOW
19	100	1500	ALUM. CASSETT WINDOW	ALUM. CASSETT WINDOW
20	100	1500	ALUM. CASSETT WINDOW	ALUM. CASSETT WINDOW
21	100	1500	ALUM. CASSETT WINDOW	ALUM. CASSETT WINDOW
22	100	1500	ALUM. CASSETT WINDOW	ALUM. CASSETT WINDOW
23	100	1500	ALUM. CASSETT WINDOW	ALUM. CASSETT WINDOW
24	100	1500	ALUM. CASSETT WINDOW	ALUM. CASSETT WINDOW
25	100	1500	ALUM. CASSETT WINDOW	ALUM. CASSETT WINDOW
26	100	1500	ALUM. CASSETT WINDOW	ALUM. CASSETT WINDOW
27	100	1500	ALUM. CASSETT WINDOW	ALUM. CASSETT WINDOW
28	100	1500	ALUM. CASSETT WINDOW	ALUM. CASSETT WINDOW
29	100	1500	ALUM. CASSETT WINDOW	ALUM. CASSETT WINDOW
30	100	1500	ALUM. CASSETT WINDOW	ALUM. CASSETT WINDOW
31	100	1500	ALUM. CASSETT WINDOW	ALUM. CASSETT WINDOW
32	100	1500	ALUM. CASSETT WINDOW	ALUM. CASSETT WINDOW
33	100	1500	ALUM. CASSETT WINDOW	ALUM. CASSETT WINDOW
34	100	1500	ALUM. CASSETT WINDOW	ALUM. CASSETT WINDOW
35	100	1500	ALUM. CASSETT WINDOW	ALUM. CASSETT WINDOW
36	100	1500	ALUM. CASSETT WINDOW	ALUM. CASSETT WINDOW
37	100	1500	ALUM. CASSETT WINDOW	ALUM. CASSETT WINDOW
38	100	1500	ALUM. CASSETT WINDOW	ALUM. CASSETT WINDOW
39	100	1500	ALUM. CASSETT WINDOW	ALUM. CASSETT WINDOW
40	100	1500	ALUM. CASSETT WINDOW	ALUM. CASSETT WINDOW
41	100	1500	ALUM. CASSETT WINDOW	ALUM. CASSETT WINDOW
42	100	1500	ALUM. CASSETT WINDOW	ALUM. CASSETT WINDOW
43	100	1500	ALUM. CASSETT WINDOW	ALUM. CASSETT WINDOW
44	100	1500	ALUM. CASSETT WINDOW	ALUM. CASSETT WINDOW
45	100	1500	ALUM. CASSETT WINDOW	ALUM. CASSETT WINDOW
46	100	1500	ALUM. CASSETT WINDOW	ALUM. CASSETT WINDOW
47	100	1500	ALUM. CASSETT WINDOW	ALUM. CASSETT WINDOW
48	100	1500	ALUM. CASSETT WINDOW	ALUM. CASSETT WINDOW
49	100	1500	ALUM. CASSETT WINDOW	ALUM. CASSETT WINDOW
50	100	1500	ALUM. CASSETT WINDOW	ALUM. CASSETT WINDOW
51	100	1500	ALUM. CASSETT WINDOW	ALUM. CASSETT WINDOW
52	100	1500	ALUM. CASSETT WINDOW	ALUM. CASSETT WINDOW
53	100	1500	ALUM. CASSETT WINDOW	ALUM. CASSETT WINDOW
54	100	1500	ALUM. CASSETT WINDOW	ALUM. CASSETT WINDOW
55	100	1500	ALUM. CASSETT WINDOW	ALUM. CASSETT WINDOW
56	100	1500	ALUM. CASSETT WINDOW	ALUM. CASSETT WINDOW
57	100	1500	ALUM. CASSETT WINDOW	ALUM. CASSETT WINDOW
58	100	1500	ALUM. CASSETT WINDOW	ALUM. CASSETT WINDOW
59	100	1500	ALUM. CASSETT WINDOW	ALUM. CASSETT WINDOW
60	100	1500	ALUM. CASSETT WINDOW	ALUM. CASSETT WINDOW
61	100	1500	ALUM. CASSETT WINDOW	ALUM. CASSETT WINDOW
62	100	1500	ALUM. CASSETT WINDOW	ALUM. CASSETT WINDOW
63	100	1500	ALUM. CASSETT WINDOW	ALUM. CASSETT WINDOW
64	100	1500	ALUM. CASSETT WINDOW	ALUM. CASSETT WINDOW
65	100	1500	ALUM. CASSETT WINDOW	ALUM. CASSETT WINDOW
66	100	1500	ALUM. CASSETT WINDOW	ALUM. CASSETT WINDOW
67	100	1500	ALUM. CASSETT WINDOW	ALUM. CASSETT WINDOW
68	100	1500	ALUM. CASSETT WINDOW	ALUM. CASSETT WINDOW
69	100	1500	ALUM. CASSETT WINDOW	ALUM. CASSETT WINDOW
70	100	1500	ALUM. CASSETT WINDOW	ALUM. CASSETT WINDOW
71	100	1500	ALUM. CASSETT WINDOW	ALUM. CASSETT WINDOW
72	100	1500	ALUM. CASSETT WINDOW	ALUM. CASSETT WINDOW
73	100	1500	ALUM. CASSETT WINDOW	ALUM. CASSETT WINDOW
74	100	1500	ALUM. CASSETT WINDOW	ALUM. CASSETT WINDOW
75	100	1500	ALUM. CASSETT WINDOW	ALUM. CASSETT WINDOW
76	100	1500	ALUM. CASSETT WINDOW	ALUM. CASSETT WINDOW
77	100	1500	ALUM. CASSETT WINDOW	ALUM. CASSETT WINDOW
78	100	1500	ALUM. CASSETT WINDOW	ALUM. CASSETT WINDOW
79	100	1500	ALUM. CASSETT WINDOW	ALUM. CASSETT WINDOW
80	100	1500	ALUM. CASSETT WINDOW	ALUM. CASSETT WINDOW
81	100	1500	ALUM. CASSETT WINDOW	ALUM. CASSETT WINDOW
82	100	1500	ALUM. CASSETT WINDOW	ALUM. CASSETT WINDOW
83	100	1500	ALUM. CASSETT WINDOW	ALUM. CASSETT WINDOW
84	100	1500	ALUM. CASSETT WINDOW	ALUM. CASSETT WINDOW
85	100	1500	ALUM. CASSETT WINDOW	ALUM. CASSETT WINDOW
86	100	1500	ALUM. CASSETT WINDOW	ALUM. CASSETT WINDOW
87	100	1500	ALUM. CASSETT WINDOW	ALUM. CASSETT WINDOW
88	100	1500	ALUM. CASSETT WINDOW	ALUM. CASSETT WINDOW
89	100	1500	ALUM. CASSETT WINDOW	ALUM. CASSETT WINDOW
90	100	1500	ALUM. CASSETT WINDOW	ALUM. CASSETT WINDOW
91	100	1500	ALUM. CASSETT WINDOW	ALUM. CASSETT WINDOW
92	100	1500	ALUM. CASSETT WINDOW	ALUM. CASSETT WINDOW
93	100	1500	ALUM. CASSETT WINDOW	ALUM. CASSETT WINDOW
94	100	1500	ALUM. CASSETT WINDOW	ALUM. CASSETT WINDOW
95	100	1500	ALUM. CASSETT WINDOW	ALUM. CASSETT WINDOW
96	100	1500	ALUM. CASSETT WINDOW	ALUM. CASSETT WINDOW
97	100	1500	ALUM. CASSETT WINDOW	ALUM. CASSETT WINDOW
98	100	1500	ALUM. CASSETT WINDOW	ALUM. CASSETT WINDOW
99	100	1500	ALUM. CASSETT WINDOW	ALUM. CASSETT WINDOW
100	100	1500	ALUM. CASSETT WINDOW	ALUM. CASSETT WINDOW

NOTES

1. All dimensions are in mm.
2. Discrepancies in dimensions or otherwise should be brought to the notice of consultant before starting the work.
3. All brickwork plastering inside or outside are in the ratio of 1:6 & 1:4 respectively & outside plastering contains water proofing.
4. All civil works are as per IS:456 and all reinforcement as per IS:1776.
5. All precautionary measures shall be taken at the time of construction of semi underground reservoir.
6. All external walls are 200, 160 thk. and all internal walls are 100 thk. unit unless otherwise specified.
7. This drawing should be used for Sanction Purpose only.
8. For details of reinforcement & RCC work refer structural drawings.
9. The building shall be structurally safe for loading load of 4000 kg/m² for the entire floor.

UNDERTAKING BY THE OWNER

1. I/We confirm that the building operation to be undertaken shall be strictly in compliance with the Architectural Drawing of the project prepared by me.
2. I/We confirm that no building material shall be deposited in any street.
3. I/We confirm that I/We shall not transfer the open space or any thereof, shown in building plan, as land appurtenance to the proposed building.

SIGNATURE OF OWNERS / DEVELOPER (CONSULTANT ARCHITECT)

Debarshi Saha
Architect
Debarshi Saha Architects
10, Park Street, Kolkata, West Bengal 700033

CERTIFICATE OF THE ARCHITECT

I certify that all the Architectural Drawing of the project prepared by me, complying with the New Town Kolkata Building Rules, 2014, I also certify that the plans and drawings prepared by me, comply with all the provisions regarding the fire safety, structural, and other requirements as mentioned in the Building Code of India and the prevailing National Building Code is found in any of the above mentioned drawings. I have not submitted to the sanctioning authority for obtaining sanction.

SIGNATURE OF GEO-TECHNICAL ENGINEER

Debarshi Saha
GEO-TECHNICAL ENGINEER
NQA REG. NO. ACR/NQA/10/00050
35A, Dr. Sengul, Basirhat, West Bengal, Kolkata-700 028

DECLARATION OF GEO-TECHNICAL ENGINEER

It is certified that the comprehensive Geo-technical report on soil investigation has been prepared by me in accordance with the provisions of the Indian Standards IS:1526-1980 for estimating the bearing capacity of the soil on which foundation of structure will be constructed. The report is attached herewith for the reference of the sanctioning authority. It is also certified that the soil investigation report has been prepared in accordance with the provisions of the Indian Standards IS:1526-1980.

SIGNATURE OF ARCHITECT

Debarshi Saha
Architect
Debarshi Saha Architects
10, Park Street, Kolkata, West Bengal 700033

SIGNATURE OF GEO-TECHNICAL ENGINEER

Debarshi Saha
GEO-TECHNICAL ENGINEER
NQA REG. NO. ACR/NQA/10/00050
35A, Dr. Sengul, Basirhat, West Bengal, Kolkata-700 028

CERTIFICATE OF THE CIVIL/STRUCTURAL ENGINEER

I certify that the structural drawing and design of both the foundation and superstructure of the building/A building has been made considering the Soil Test Report (as per these rules and the regulations made under the act) and also considering all possible loads, seismic and other loads as mentioned in the Building Code of India and the prevailing National Building Code is found in any of the above mentioned drawings. I have not submitted to the sanctioning authority for obtaining sanction.

SIGNATURE OF ARCHITECT

Debarshi Saha
Architect
Debarshi Saha Architects
10, Park Street, Kolkata, West Bengal 700033

SIGNATURE OF STRUCTURAL ENGINEER

Debarshi Saha
STRUCTURAL ENGINEER
NQA REG. NO. ACR/NQA/10/00050
35A, Dr. Sengul, Basirhat, West Bengal, Kolkata-700 028

ARCHITECTURAL DRAWING

BLOCK 2 B+G+12
FLOOR PLANS
5TH, 8TH, 11TH (TYPICAL)
2ND FLOOR PLAN
3RD, 6TH, 9TH (TYPICAL)
SCALE
DRAWING NO.
ARCH/SANC/02/A
DATE

ARCHITECT

Dr. S. S. Saha
35-A, DR. SENGUL, BASIRHAT, KOLKATA-700028
Tel: 91-33-2665-4130 / 4139
Website: www.debarshisaha.com

BLOCK 2 B+G+12

THIS DRAWING HAS NOT BEEN PUBLISHED AND IS THE SOLE PROPERTY OF SPACE AND IS ISSUED TO THE CLIENT FOR THE SPECIFIC PROJECT AND NOT BE REPRODUCED OR COPIED IN ANY MANNER WITHOUT THE WRITTEN PERMISSION OF SPACE ARCHITECTS.

